

NIELSEN HARDWARE

See Pages C-8 & C-10
For Hardware Prices

| Item# | Description | Price | Each |
|----------|---------------------------------------|---------|-------------|
| NHA-01 | Nielsen Spring | 1-99 | .09 |
| | | 100-999 | 8.10 .08 |
| | | 1000+ | 60.30 .06 |
| NHA-05 | Snap Hanger WILL NOT FIT GLIDED | 1-99 | .09 |
| | | 100-999 | 8.10 .08 |
| | | 1000+ | 60.30 .06 |
| NHA-0561 | Snap Polybag | 1-99 | 1.47 |
| | | 100-199 | 142.59 1.43 |
| | | 200+ | 282.24 1.41 |
| NHA-07 | Tapped Corner | 1-99 | .25 |
| | | 100-999 | 22.50 .23 |
| | | 1000+ | 153.13 .15 |
| NHA-08 | Quick Corner | 1-99 | .30 |
| | | 100-999 | 26.84 .27 |
| | | 1000+ | 191.04 .19 |
| NHA-09 | Notched Hanger WILL NOT FIT GLIDED | 1-99 | .19 |
| | | 100-999 | 17.27 .17 |
| | | 1000+ | 117.46 .12 |
| NHA-15 | Bumpers-pack Of 1000 | 33.25 | |
| NHA-17 | Back Plate | 1-99 | .10 |
| | | 100-999 | 9.00 .09 |
| | | 1000+ | 60.00 .06 |
| NHA-33 | Security Key | .18 | |
| NHA-38 | Security Lock WILL NOT FIT GLIDED | 1-99 | 3.36 |
| | | 100+ | 16.97 .17 |
| NHA-39 | Security Hook WILL NOT FIT GLIDED | 1-99 | .18 |
| | | 100+ | 17.18 .17 |

| Item# | Description | Price | Each |
|------------|--|---------|---------------|
| NHA-43 | Omni Hanger WILL NOT FIT GLIDED | 1-99 | .19 |
| | | 100-999 | 17.27 .17 |
| | | 1000+ | 117.46 .12 |
| * NHA-2362 | Security Hanger Boxed (1 Key, 2 Hooks, 1 Lock) WILL NOT FIT GLIDED | 1-49 | 4.79 |
| | | 50-99 | 226.97 4.54 |
| | | 100+ | 430.38 4.30 |
| NHA-2363 | Security Hangers Bulk Pack | 294.51 | |
| NHA-4361 | Polybag w/Omni Hanger (For 1 Frame) | 1-99 | 1.58 |
| | | 100-199 | 153.40 1.53 |
| | | 200+ | 303.74 1.52 |
| * NHA-4363 | Bulk Pack w/omni Hanger (For 100 Frame) | 1 | 116.75 |
| | | 2-4 | 226.71 113.35 |
| | | 5+ | 561.10 112.22 |
| NHA-4371 | Polybag Qk Corner w/Omni (For 1 Frame) | 1-99 | 1.52 |
| | | 100-199 | 147.58 1.48 |
| | | 200+ | 292.20 1.46 |
| * NHA-4373 | Bulk Pack/Qk Corn w/Omni | 1 | 116.75 |
| | | 2-4 | 226.82 113.41 |
| | | 5+ | 533.72 106.74 |
| NHA-7011 | Gilded Notched Hanger | 1-49 | .12 |
| | | 50+ | 5.40 .11 |
| NHA-7061 | Gilded Notched Polybag | 1.15 | |
| NHA-7111 | Gilded Omni Hardware | 1-49 | .12 |
| | | 50+ | 5.40 .11 |
| NHA-7161 | Gilded Omni Polybag | 1.15 | |

* 100-999 Price is per pack of 100 (not 999)

Some prices on 100 & 1000
packs will vary due to rounding

Bulk Packs Include:

- NHA-2363** 10 Keys, 200 Hooks, 100 Locks
- NHA-4363** 200 Hangers, 400 Corners, 400 Back Plates, 800 Springs
- NHA-4373** 200 Hangers, 400 Quick Corners, 800 Springs

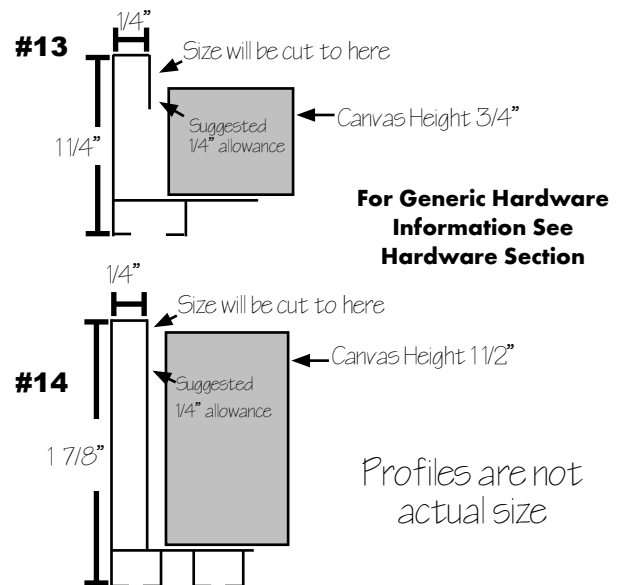
IMPORTANT - YOU MUST READ THIS

* **Chop allowances for Nielson #13 and #14 only** *

- LeWinter will automatically add 1/2" to the measurement you give us. This in turn will give you a 1/4" float around your canvas.
- If you do not want any allowance, you must tell us to "cut exact with no allowance".
- Otherwise, all orders for #13 and #14 will be cut with a 1/2" allowance (1/4" all around).

Example:

- You order a 16" X 20" and say 1/4" allowance or 1/2" total allowance - We enter and cut the frame at 16 1/2" X 20 1/2"
- You order a 16" X 20" and say exact - no allowance - We enter and cut the frame at 16 X 20, no allowance
- You order a 16 X 20. If you say nothing: - We will automatically cut 16 1/2" X 20 1/2", 1/4" allowance



NIELSEN HARDWARE

INTRODUCING a revolutionary new product...



Gilded provides the framer with a new look in moulding designs. Minimal wood mouldings are difficult to join and certainly do not have the strength to accommodate larger art and framed pieces. The collection features a rabbet depth that can accommodate multiple mats and has the strength and ease of metal moulding.

Decorative and gilded finishes are hand applied and are extremely durable. Decorative elements are applied directly to the moulding in a specially formulated compo design to adhere directly to a metal surface.

Nielsen Gilded also features a special hardware channel that will accommodate a dust cover. This makes this collection completely archival.

- Dust Cover Application Channel
- Strength of metal with the Look and Feel of Wood
- Easy to Join

Hanger Dilemma

Gilded requires special hangers. Gilded hangers do **not** work in other Nielsen profiles. Other hangers do **not** work in Gilded. You must order by part number. If you just say polybag or hanger, we don't know what type. We will **not** be responsible for any cost to get the correct hanger. We suggest you buy a pack of 50 hangers to keep on hand.

| Hanger Cheat Sheet | | | |
|---|----------------------------|--|---------------------------------|
| Fits All Nielsen Profiles Except Gilded | | Fits Gilded Profiles Only | |
| AM-20 | Euro Hanger | NHA-7061 | Polybag - Gilded Notched Hanger |
| AM-50 | Polybag - Euro Hanger | NHA-7161 | Polybag - Gilded Omni Hanger |
| NHA-05 | Snap Hanger | NHA-7011 | Gilded Notched Hanger |
| NHA-0561 | Polybag - Snap Hanger | NHA-7111 | Gilded Omni Hanger |
| NHA-09 | Notched Hanger | There are no bulk packs that contain Gilded Hangers | |
| NHA-43 | Omni Hanger | | |
| NHA-4361 | Polybag Omni Hanger | | |
| NHA-4371 | Quick Corner w/Omni Hanger | | |

Bulk packs only have hangers for all Nielsen Profiles except Gilded

If you want a bulk pack - order AM-40 (bulk pack with no hangers) and order hanger separately

P.S. Nielsen Security Hangers Do Not Fit Gilded Profiles

See Page C-9 For Prices

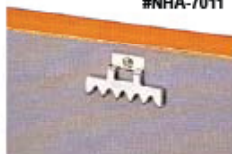
For Generic Hardware Information See Hardware Section

NEW HANGING HARDWARE

Samples of this new Gilded Omni hanger and Gilded Notched Hanger will be included with the corner sample mailing. All corners samples will be labeled; hand finished and requires special hanging hardware. The part codes for this hardware will be included.

Corners joining hardware is the same.

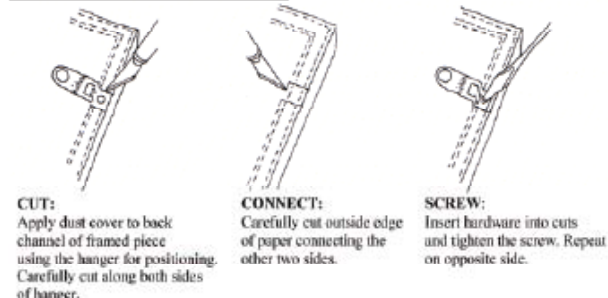
Gilded Notched Hanger
#NHA-7011



Gilded Omni Hanger
#NHA-7111



HARDWARE INSTRUCTIONS:



NIELSEN GENERIC MOULDING

* Generic length assort for discounts Price will show as net on your invoice

| Similar To Profile | Item # | Finish | Box Qty | Set # | 5000+ ft. Net Cost | 4000-4980 ft. Net Cost | 1600-3980 ft. Net Cost | 800-1580 ft. Net Cost | 500-780 ft. Net Cost | 300-480 ft. Net Cost | 20-280 ft. Net Cost | Chop | Straight Cut |
|--------------------|--------|----------------|---------|--------|--------------------|------------------------|------------------------|-----------------------|----------------------|----------------------|---------------------|------|--------------|
| #93 | 202-01 | Silver | 400 | OEM 2 | .68 | .70 | .74 | .79 | .84 | .88 | .93 | 1.54 | 1.24 |
| | 202-02 | Frosted Silver | 400 | OEM 2 | .68 | .70 | .74 | .79 | .84 | .88 | .93 | 1.54 | 1.24 |
| | 202-03 | Gold | 400 | OEM 2 | .68 | .70 | .74 | .79 | .84 | .88 | .93 | 1.54 | 1.24 |
| | 202-04 | Frosted Gold | 400 | OEM 2 | .68 | .70 | .74 | .79 | .84 | .88 | .93 | 1.54 | 1.24 |
| | 202-13 | Contrast Gray | 400 | OEM 2 | .76 | .78 | .83 | .88 | .94 | .99 | 1.04 | 1.73 | 1.39 |
| | 202-20 | Anodic Black | 400 | OEM 2 | .76 | .78 | .83 | .88 | .94 | .99 | 1.04 | 1.73 | 1.39 |
| | 202-21 | Matte Black | 400 | OEM 2 | .76 | .78 | .83 | .88 | .94 | .99 | 1.04 | 1.73 | 1.39 |
| #5 | 205-01 | Silver | 400 | OEM 5 | .64 | .65 | .70 | .74 | .78 | .83 | .87 | 1.45 | 1.16 |
| | 205-03 | Gold | 400 | OEM 5 | .64 | .65 | .70 | .74 | .78 | .83 | .87 | 1.45 | 1.16 |
| | 205-13 | Contrast Gray | 400 | OEM 5 | .72 | .74 | .78 | .83 | .88 | .93 | .98 | 1.64 | 1.31 |
| | 205-20 | Anodic Black | 400 | OEM 5 | .72 | .74 | .78 | .83 | .88 | .93 | .98 | 1.64 | 1.31 |
| | 205-21 | Matte Black | 400 | OEM 5 | .72 | .74 | .78 | .83 | .88 | .93 | .98 | 1.64 | 1.31 |
| #11 | 211-01 | Silver | 400 | OEM 11 | .64 | .65 | .70 | .74 | .78 | .83 | .87 | 1.45 | 1.16 |
| | 211-02 | Frosted Silver | 400 | OEM 11 | .64 | .65 | .70 | .74 | .78 | .83 | .87 | 1.45 | 1.16 |
| | 211-03 | Gold | 400 | OEM 11 | .64 | .65 | .70 | .74 | .78 | .83 | .87 | 1.45 | 1.16 |
| | 211-04 | Frosted Gold | 400 | OEM 11 | .64 | .65 | .70 | .74 | .78 | .83 | .87 | 1.45 | 1.16 |
| | 211-13 | Contrast Gray | 400 | OEM 11 | .72 | .74 | .78 | .83 | .88 | .93 | .98 | 1.64 | 1.31 |
| | 211-14 | German Silver | 400 | OEM 11 | .64 | .65 | .70 | .74 | .78 | .83 | .87 | 1.45 | 1.16 |
| | 211-20 | Anodic Black | 400 | OEM 11 | .72 | .74 | .78 | .83 | .88 | .93 | .98 | 1.64 | 1.31 |
| | 211-21 | Matte Black | 400 | OEM 11 | .72 | .74 | .78 | .83 | .88 | .93 | .98 | 1.64 | 1.31 |
| #15 | 215-01 | Silver | 320 | OEM 15 | .76 | .78 | .83 | .88 | .94 | .99 | 1.04 | 1.73 | 1.39 |
| | 215-02 | Frosted Silver | 320 | OEM 15 | .76 | .78 | .83 | .88 | .94 | .99 | 1.04 | 1.73 | 1.39 |
| | 215-03 | Gold | 320 | OEM 15 | .76 | .78 | .83 | .88 | .94 | .99 | 1.04 | 1.73 | 1.39 |
| | 215-04 | Frosted Gold | 320 | OEM 15 | .76 | .78 | .83 | .88 | .94 | .99 | 1.04 | 1.73 | 1.39 |
| | 215-13 | Contrast Gray | 320 | OEM 15 | .82 | .85 | .90 | .96 | 1.02 | 1.07 | 1.13 | 1.89 | 1.51 |
| | 215-14 | German Silver | 320 | OEM 15 | .82 | .85 | .90 | .96 | 1.02 | 1.07 | 1.13 | 1.89 | 1.51 |
| | 215-20 | Anodic Black | 320 | OEM 15 | .82 | .85 | .90 | .96 | 1.02 | 1.07 | 1.13 | 1.89 | 1.51 |
| | 215-21 | Matte Black | 320 | OEM 15 | .82 | .85 | .90 | .96 | 1.02 | 1.07 | 1.13 | 1.89 | 1.51 |

For Samples - Please Call

See Page C-1 For Information on Straight Cut

| Chop Discount | |
|-------------------------|------------|
| Same Size - Same Finish | |
| Qty | Discount % |
| 10 | 5% |
| 15 | 10% |
| 20 | 15% |
| 25 | 20% |
| 100 | 25% |

Length Discount - See Above

20 feet minimum per profile. Length in 20 ft increments only.

- * Order Box Quantity for convenience only.
- Price will show as net on your invoice
- You can assort Nielsen Generic length for discount
- However, Nielsen Generic length does not assort with other metal products for discount.

For Chop Orders Over \$75
Free UPS and a 5% discount (on chops) if paid in 15 days.
See page C-1 & C-2 for information on discounts and scheduling.

See Pages C-2 thru C-4 for Branded Nielsen

See Pages C-8, C-9, C-10 for Hardware

